



TREATMENTS
MENU

THALION

CRÉATEUR DE COSMÉTIQUE MARINE



The THALION treatment experience begins with the Senses of the Sea, a marine prelude which promotes blissful relaxation of body and mind, and thus increases the benefits of the treatment to be followed.

At the heart of each THALION treatment, the therapist performs the Marine Choreographies, massage techniques inspired by the movements of the sea, to enhance effectiveness and well-being.

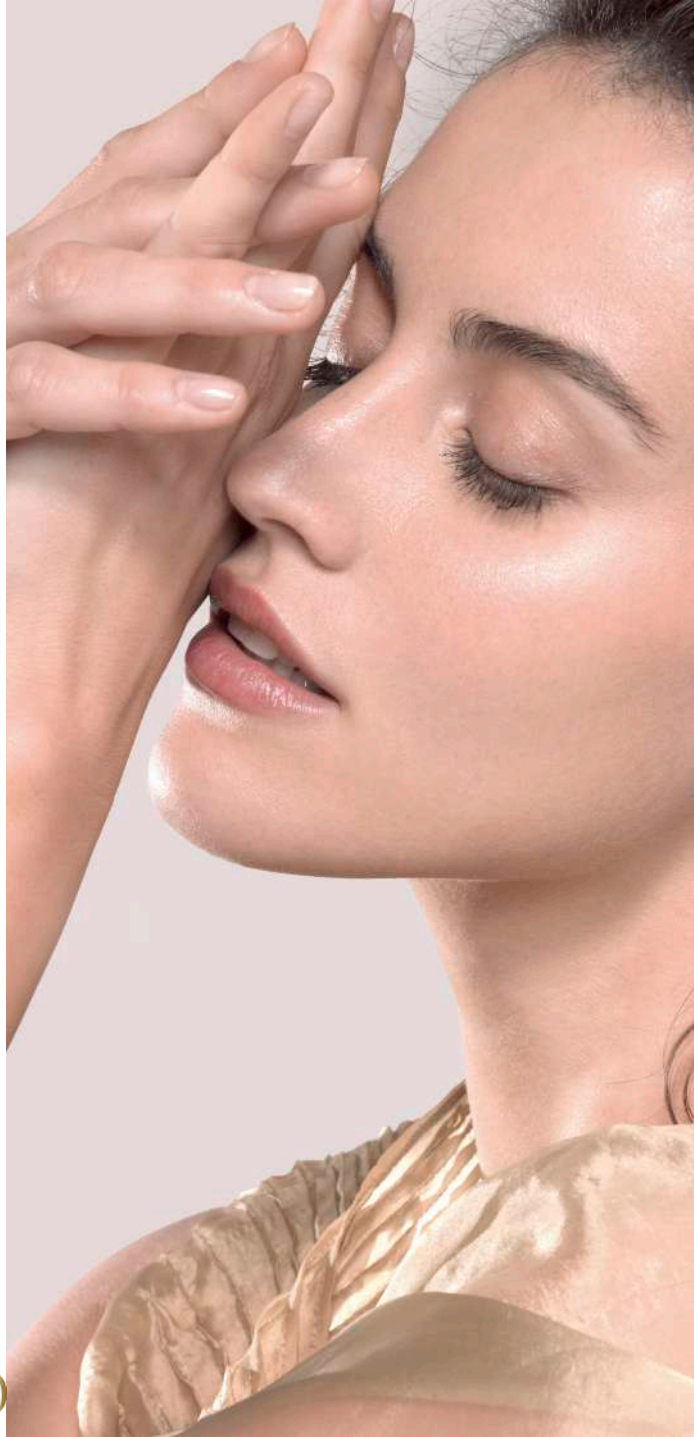
FACE TREATMENTS



MEN TREATMENTS



BODY TREATMENTS





FACE TREATMENTS

STRENGTHEN & REVITALIZE

SIGNATURE TREATMENT

HYDRA-MINERAL _____ 60'

This facial features a unique combination of marine technology and luscious textures, with a double marine mask and a mineral gel with high concentrations of all 112 trace elements found in the ocean. Skin is intensely hydrated and bathed in minerals, leaving it fresh and plump.

HYDRATE

ABSOLUTE HYDRATION _____ 60'

This treatment bathes the face in moisture, concentrating the benefits of marine extracts to quench the skin. Skin is perfectly moisturized, regaining comfort, radiance, and softness.

BEAUTY ENHANCER _____ 30'

A 30-minute marine facial with a detoxifying scrub, creamy mask, and a relaxing massage for an instant healthy glow.

NOURISH

INTENSE NUTRITION _____ 60'

The precious marine oils in this essential facial for dry, weakened skin provide nutrition and immediate comfort. Skin is nourished and repaired.



ENERGIZING

ENERGY & RADIANCE _____ 60'

This energizing facial gives your skin a shot of marine minerals, trace elements, and vitamins from “super seaweeds” to boost radiance and erase the signs of fatigue. It leaves a fresh, rosy complexion and glowing, rested skin.

EASE

SENSI-MARINE _____ 60'

Real source of comfort, this facial instantly immerses the skin in a bubble of serenity. Its soothing patented marine active ingredients are combined with probiotics to restore the natural balance of the skin. Its sensory and soft textures respect the skin’s sensitivity. Stronger and better protected, the skin is soothed and comfortable.

REGULATE

MARINE SEBO-PUR _____ 60'

Concentrated in powerful marine active ingredients, this 4-step treatment restores the skin’s microbiota, regulates excessive sebum production and unclogs pores. After your therapist’s diagnosis, the treatment is adapted to your skin’s needs. Imperfections are reduced, shine neutralized and the skin texture smooth and unified. The complexion is fresh and luminous.

LIGHTENING

INTENSE WHITE _____ 60'

This high-performance brightening treatment with Pylawhite®, a patented marine active ingredient, has two effects: overall lightening and targeted action on dark spots. It leaves a more even, incredibly bright and luminous complexion.







PRESERVE YOUTH

ABSOLUTE YOUTH _____ 60'

An all-new anti-ageing facial highly concentrated in Sea Age 3A, a patented marine active ingredient that fills wrinkles and smooths the skin. A mousse mask is massaged onto the skin to plump it up from within. Wrinkles are less visible; youthfulness is restored.

LIFT & FIRM _____ 60'

This facial, ideal for skin that lacks firmness, combines cutting-edge marine active ingredients developed by scientists with a firming massage and a unique tightening mask. Facial features are smoothed, skin is firmer, and contours are more well-defined.

SIGNATURE TREATMENT

EXTRAORDINARY ANTI-AGEING FACIAL _____ 90'

This extraordinary facial concentrates the quintessence of Thalion's technical know-how and the sensory appeal of its products. The treatment is centred around an exclusive Face Gym Lift massage that sculpts the contours of the face and lifts the features. Marine pearls are applied to every wrinkle for an instant filling effect. The face is reshaped; skin is even and luminous.

CELL RENEWAL _____ 60'

This facial creates an alchemy between minerals and acids derived from the sea to stimulate cell renewal intensely for a "new skin" effect. Skin texture is refined, skin is smooth, and the complexion is clear and even.

EYE LIFT EXPERT _____ 30'

This targeted facial uses a concentrated cocktail of marine extracts to intensely plump up the area around the eyes and protect it from premature ageing. A genuine cell booster stimulates microcirculation to instantly decongest this fragile area. High-precision action lifts lines and firms up the eyelids.





MEN TREATMENTS

BALANCE & REMINERALIZE

FACIAL OXYGEN BOOSTER _____ 60'

This 100% effective facial designed for men is a burst of oxygen and marine minerals.
Objective: to hydrate skin and preserve its youthful appearance with specific products.
Sixty minutes for stronger, more handsome skin.

PURE DETOX _____ 45'

This high-tech treatment combining relaxation and powerful marine active ingredients purifies skin and clears it of imperfections. The complexion is radiant.

All THALION' body treatments are mixed and suitable for men.





BODY TREATMENTS

DETOXIFY

DETOX RITUAL _____ 90'

This unique treatment is a delight to the senses and can be performed year-round or during seasonal changes. It combines a purifying exfoliation with a detox massage using the pleasant texture of Marine Friction. A detoxifying relaxation phase stimulates elimination and drains toxins. The body feels light and purified.

SLIM

EXPRESS SLIMMING _____ 30'

The Thalion slimming massage rolls marine pearls and melts them on the skin to deliver Algoslim®, a precious, patented marine active ingredient that activates fat burning. Results are visible from the first treatment!

SIGNATURE TREATMENT

[3D] CELLULITE _____ 60'

This anti-cellulite treatment uses a new technique: the superposition, in thin layers, of a multitude of textures to saturate the skin with marine active ingredients. Combined with a deep massage of the adipose tissue, the formulas act at the heart of the epidermis to fight against the 3 dimensions of cellulite.

STOMACH SCULPTOR _____ 45'

An unprecedented curative and preventive approach to fighting excess abdominal fat. This treatment combines the Zen Abdomen massage technique developed by a physiotherapist with a trio of magnesium oil, Guérande mud, and Stomach & Waist Reshaper for visible results from the very first session.

MARINE SLIMMING – WRAP OR BATH _____ 60'

An emblematic marine treatment combining exfoliation with a wrap or a bath using kelp from Brittany, known for its slimming power. The minerals and trace elements kickstart the elimination mechanism to visibly refine the figure.



DRAIN

TONED LEGS _____ 60'

A must-have treatment with an icy cooling effect that decongests and instantly relieves heavy legs, leaving them light, shapely, and comfortable.

FIRM

FIRMING PERFECTION _____ 45'

This is a firming solution following pregnancy, weight loss, or for mature skin. The three-step protocol includes toning exfoliation, a firming mask with spirulina algae, and a massage to tone the skin. Firmness and elasticity are restored.

BUST PERFECTION _____ 45'

This particularly delicate, exposed area requires special attention. The bust is gently exfoliated and then sculpted with a spirulina algae mask and firming massage. The bust and décolleté are smoothed; firmness and tone are restored.







REJUVENATING RITUAL

INTENSE REVITALIZATION MASSAGE _____ 60'

A set of techniques to relax muscles and joints is performed. The body is put into a state of ultimate relaxation thanks to the signature massage, which associates deep muscular gestures and rebalancing action thanks to the power of seawater.

AVEC GOMMAGE _____ 90'

Toning scrub with marine magnesium and sea salt that leaves the skin feeling velvety smooth.

SIGNATURE TREATMENT

INTENSE REVITALIZATION TREATMENT _____ 120'

Mineral Therapies treatment combine the best of the beauty world and physiotherapy. It acts as a «super charger» to restore the body original mineral balance.

A set of techniques to relax muscles and joints is performed. The body is put into a state of ultimate relaxation thanks to the signature massage, which associates deep muscular gestures and rebalancing action thanks to the power of seawater.





WELLNESS RITUAL

DIVINE SCRUBS _____ 20'

This exfoliation with its enveloping and oily-like texture, makes this scrub a real moment of relaxation. It leaves the skin smooth, sublimated and gently scented.

TIARÉ ENVOÛTANTE

A sensual and sunny fragrance, which envelops the skin with its exquisite and generous warmth.

AGRUMES PÉTILLANTS

A fresh and tangy fragrance with joyful and delicious notes.

OCEANIC BLISS MASSAGE _____ 60'

The journey of the senses begins with a selection of scents that provides the treatment with sunny and joyful notes. The body is enveloped in a delightful scrub, that sublimates the skin, then slowly immersed in a cocoon of well-being thanks to the Oceanic Bliss Massage: Marine and solar choreography and the Hypno-Slow technique provide an exquisite sensation of relaxation. The ritual ends with the application of a melting balm. A true interlude of peacefulness.

SIGNATURE TREATMENT

OCEANIC BLISS RITUAL _____ 90'

A unique multi-sensory experience designed to immerse the body and mind into a state of deep relaxation, through an exclusively manual massage combined with 100% natural marine textures. The journey of the senses begins with a selection of scents that provides the treatment with sunny and joyful notes: Captivating Tiare or Sparkling Citrus fragrance. The body is enveloped in a delightful scrub, that sublimates the skin, then slowly immersed in a cocoon of well-being thanks to the Oceanic Bliss Massage. Marine and solar choreography and the Hypno-Slow technique provide an exquisite sensation of relaxation. The ritual ends with the application of a melting balm. A true interlude of peacefulness.



THALASSO BEAUTY

SEA SALT SCRUB _____ 30'

This truly replenishing marine treatment starts with salt crystal exfoliation followed by a nourishing sea bath or a beneficial seawater body wrap to restore energy and vitality.

BACK RELAXATION _____ 45'

This back treatment involves three steps: a purifying scrub, a relaxing Guérande mud mask, and an incredibly relaxing massage that works out tension in the neck, shoulders, and back.

MOISTURIZE & NOURISH

HANDS HEAVEN _____ 30'

This gentle treatment combines effective marine extracts with relaxation techniques to leave hands incredibly soft and satiny.

VELVET FEET _____ 30'

An essential treatment for beautiful feet! It combines marine magnesium with pleasant textures and a relaxing foot and leg massage. Feet are nourished and beautiful.





Laboratoires THALION
Prat Menan - 29880 PLOUGUERNEAU
www.thalion.com – contact@thalion.com